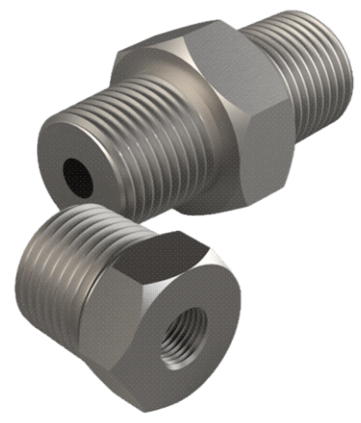


Accesorios para instrumentacion.

Descripción

- Accesorios diseñados para un sellado hermetico para uso en industria en general.
- Fabricados en materiales de alta resistencia como Acero al carbono, Acero 316, Latón, etc.
- Con roscas disponibles en cuerda NPT, BSP, BSPP, etc.
- Facil instalacion y excelente solucion para unir, extender o modificar



- Conexiones roscadas en referencia a la norma ASME B1.20.1., ISO 7/1.
- Conexiones en referencia a la norma B16.11.
- Apto para presiones de 0 hasta 7200psi dependiendo el material.

¿Cómo ordenar?



Serie	
NIPLE	NIPLE
MNIPLE	MEDIO NIPLE
ADP	ADAPTADOR
COPE	COPE

Tipo de Niple	
HX	Hexagono
PC	Perfil circular*

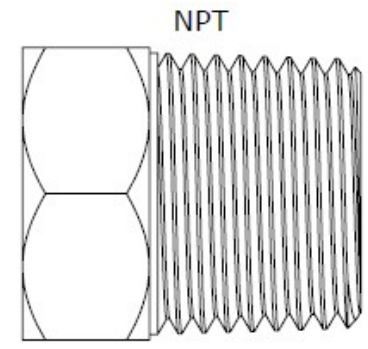
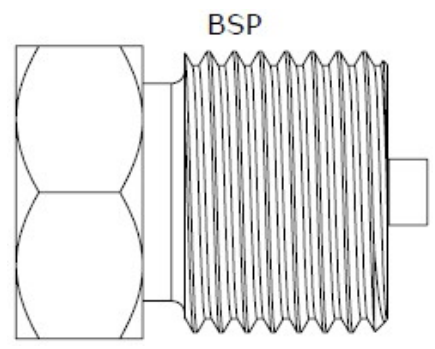
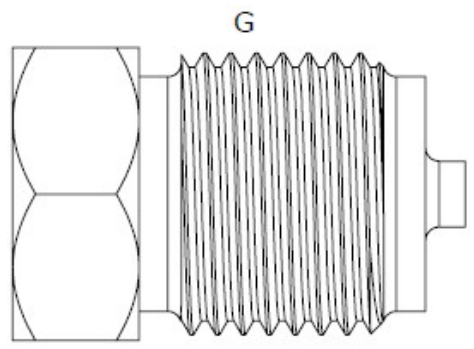
* Esta opcion no esta disponible para Medio Niple.

Material de fabricacion	
A	Ac. al Carbón
Z	Latón
X	SS316
Y	SS304
H	ALLOY C276
M	ALLOY 400

Conexión C1**	
1	1/8" NPT
2	1/4" NPT
3	3/8" NPT
4	1/2" NPT
5	3/4" NPT
6	1" NPT

Conexión C2**	
**Para otro tipo de cuerda colocar la letra correspondiente al lado del tamaño.	
G	BSPP
B	BSP

Para roscas metricas y otro tipo de cuerda consultar con el vendedor.

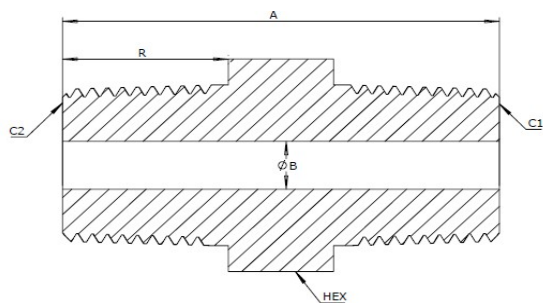


Para las cuerdas G y BSP tiene una opcion sin el



https://industrialseter.com/

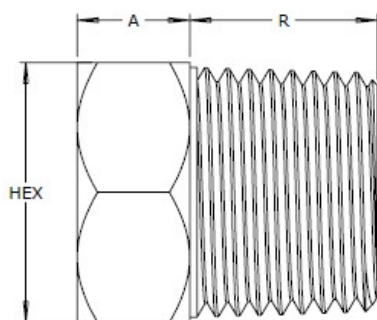
Niple



Cuerda macho		R	A	HEX	B
C1	C2	Inch	Inch	Inch	Inch
1/8	1/8	0.375	1.0625	7/16	1/8, 5/32, 3/16, 1/4, 3/4
1/4	1/4	0.5625	1.4375	5/8	
1/4	1/8	.5625/.375	1.25	5/8	
3/8	3/8	0.5625	1.4375	3/4	
3/8	1/4	0.5625	1.4375	3/4	
3/8	1/8	.5625/.375	1.2813	3/4	
1/2	1/2	0.75	1.9375	7/8	
1/2	3/8	.75/.5625	1.75	7/8	
1/2	1/4	.75/.5625	1.75	7/8	
1/2	1/8	.75/.375	1.5938	7/8	
3/4	3/4	0.75	1.9628	1-1/8	
3/4	1/2	0.75	1.9628	1-1/8	
3/4	3/8	.75/.5625	1.7813	1-1/8	
3/4	1/4	.75/.5625	1.7813	1-1/8	
3/4	1/8	.75/.375	1.5938	1-1/8	
1	1	0.9375	2.3438	1-3/8	
1	3/4	.9375/.75	2.0938	1-3/8	
1	1/2	.9375/.75	2.1562	1-3/8	
1	3/8	.9375/.5625	1.9628	1-3/8	
1	1/4	.9375/.5625	1.9628	1-3/8	
1	1/8	.9375/.375	1.78125	1-3/8	

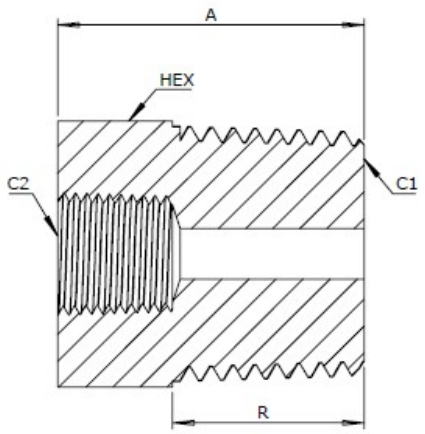
<https://industrialseter.com/>

Medio Niple



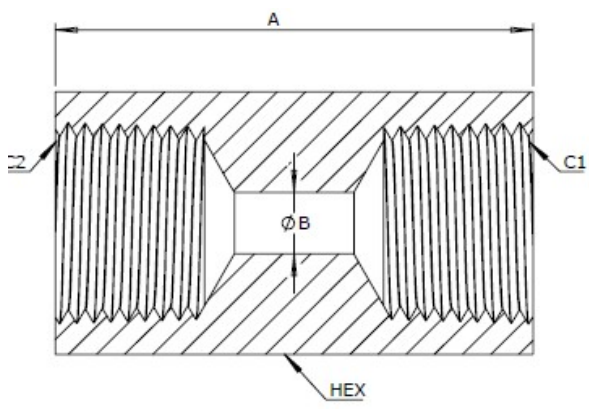
Cuerda macho	R	A	HEX	B
C1	Inch	Inch	Inch	Inch
1/8	0.38	0.25	0.44	1/8, 5/32, 3/16, 1/4, 3/4
1/4	0.44	0.25	0.62	
3/8	0.50	0.31	0.69	
1/2	0.56	0.31	0.88	
3/4	0.62	0.38	1.06	
1	0.75	0.38	1.38	

Adaptador



Cuerda macho		R	A	HEX	B
C1	C2	Inch	Inch	Inch	Inch
1/8	1/8	0.375	1.0625	7/16	1/8, 5/32, 3/16, 1/4, 3/4
1/4	1/4	0.5625	1.4375	5/8	
1/4	1/8	.5625/.375	1.25	5/8	
3/8	3/8	0.5625	1.4375	3/4	
3/8	1/4	0.5625	1.4375	3/4	
3/8	1/8	.5625/.375	1.2813	3/4	
1/2	1/2	0.75	1.9375	7/8	
1/2	3/8	.75/.5625	1.75	7/8	
1/2	1/4	.75/.5625	1.75	7/8	
1/2	1/8	.75/.375	1.5938	7/8	
3/4	3/4	0.75	1.9628	1-1/8	
3/4	1/2	0.75	1.9628	1-1/8	
3/4	3/8	.75/.5625	1.7813	1-1/8	
3/4	1/4	.75/.5625	1.7813	1-1/8	
3/4	1/8	.75/.375	1.5938	1-1/8	
1	1	0.9375	2.3438	1-3/8	
1	3/4	.9375/.75	2.0938	1-3/8	
1	1/2	.9375/.75	2.1562	1-3/8	
1	3/8	.9375/.5625	1.9628	1-3/8	
1	1/4	.9375/.5625	1.9628	1-3/8	
1	1/8	.9375/.375	1.78125	1-3/8	

Cople



Cuerda macho		R	A	HEX	B
C1	C2	Inch	Inch	Inch	Inch
1/8	1/8	0.375	1.0625	7/16	1/8, 5/32, 3/16, 1/4, 3/4
1/4	1/4	0.5625	1.4375	5/8	
1/4	1/8	.5625/.375	1.25	5/8	
3/8	3/8	0.5625	1.4375	3/4	
3/8	1/4	0.5625	1.4375	3/4	
3/8	1/8	.5625/.375	1.2813	3/4	
1/2	1/2	0.75	1.9375	7/8	
1/2	3/8	.75/.5625	1.75	7/8	
1/2	1/4	.75/.5625	1.75	7/8	
1/2	1/8	.75/.375	1.5938	7/8	
3/4	3/4	0.75	1.9628	1-1/8	
3/4	1/2	0.75	1.9628	1-1/8	
3/4	3/8	.75/.5625	1.7813	1-1/8	
3/4	1/4	.75/.5625	1.7813	1-1/8	
3/4	1/8	.75/.375	1.5938	1-1/8	
1	1	0.9375	2.3438	1-3/8	
1	3/4	.9375/.75	2.0938	1-3/8	
1	1/2	.9375/.75	2.1562	1-3/8	
1	3/8	.9375/.5625	1.9628	1-3/8	
1	1/4	.9375/.5625	1.9628	1-3/8	
1	1/8	.9375/.375	1.78125	1-3/8	

Data Sheet CS 210 Ver.1

<https://industrialseter.com/>